

COMBINING CONCURRENT AND ONLINE REPORTING SLASHES A HUGE EXPENSE

If you aren't reporting online with UPEnterprise, you are paying up to 60 times more than you should. Let's do the math:

Direct Expense of Manual Reporting



A professional fulfillment company conducted a time-and-motion study to determine what it really costs to compile, package, and ship unclaimed property reports manually.


This is what they came up with, by the numbers:



- Produce the report 4 minutes
- Print the coversheet 2 minutes
- Mark where signatures were needed 2 minutes
- Secure the signed coversheet 8 minutes
- Burn a CD 7 minutes
- Test the CD 3 minutes
- Label the CD 5 minutes
- Put the package together 5 minutes
- Create the shipping label 7 minutes

➔ Coming from Manual

Say you have 25 companies and have to report to all 50 states. With any other system, you end up creating, printing, and compiling 1250 reports with cover sheets and possibly other forms. That's 25 companies multiplied by 50 states! Don't forget your state payments – you'd have to write 1250 checks....

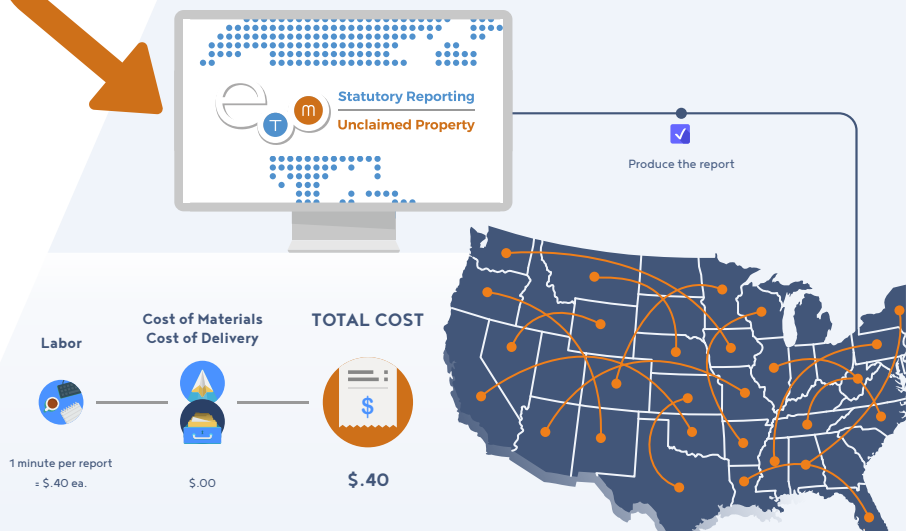
Labor	Cost of Materials	Cost of Delivery	TOTAL COST
			
\$17.41 per report \$36,000/yr. with benefits = \$24.30/hr	\$1.50	\$5.75 (USPS Priority Mail) to \$21.00 (FedEx - 2 day)	\$24.66 to \$39.91

Direct Expense of Online Reporting



➔ Going to Automation

....With UPEnterprise Consolidated Reporting, your 1250 reports are condensed into just 50 reports – one per state. The 1250 checks? Now only 50 – one check from all 25 companies for each state.



AUTOMATING WHAT YOU DO MANUALLY NOW

All companies have manual gaps in their compliance process, but UPEnterprise gives you options to eliminate many of them. For example:



DATA SYNCHRONIZATION (API Integration)

UPEnterprise enables real-time integration to your source data systems eliminating the decentralized data management issues created when data exists in multiple locations. Using our proprietary API, you can now synchronize between your source systems and your unclaimed property management systems. Now your source systems will know the exact date to report the unclaimed property item along with the window for sending due diligence letters. Older technology for unclaimed property compliance requires the labor-intensive and error-prone tasks of extracting, transferring, and importing data. With data synchronization, system-to-system integration occurs to add, update, and delete unclaimed property information in the UPEnterprise database "on-demand."



ONLINE PRINT AND MAIL

While all unclaimed property software allows you to create customized search letters, you still have to do the bulk of the manual work. Meaning, you still have to print, fold, stuff, seal, and meter your search and due diligence letters to get them out the door. No longer. Our exclusive online printing capability allows you to create reusable letter templates, then print them yourself.



UNCLAIMED PROPERTY CALENDAR

Desktop software quickly becomes out of date since compliance changes occur routinely throughout the year. Consequently, many companies do their own research, manually analyzing the various state websites to stay on top of unclaimed property regulatory changes.

As a fully-managed web service, you can use the online unclaimed property calendar within UPEnterprise as a resource to look up the latest due diligence and state report filing requirements. Streamline your reporting process by receiving change notifications, downloading information to your personal calendar, and creating alerts and notes and assigning them to or sharing them with coworkers.

REDUCING YOUR LIABILITIES

Experts agree resolving outstanding unclaimed property liabilities as early as possible is a best practice to assure compliance while reducing exposure. In the past, most organizations did not have the time, tools, nor training to take advantage of the opportunity to reunite owners with lost property quickly and easily. UPEnterprise helps shrink your unclaimed property liabilities with these pre-escheat options:



UPTOOLS FOR POSITIVE ADDRESS VERIFICATION (PAV)

PAV is a service that corrects, standardizes, and verifies addresses to reduce your postage costs and minimizes the number of due diligence letters you get back from the post office.

PAV is a CASS-certified service that standardizes addresses according to the United States Postal Service (USPS) and Canadian Post specifications, corrects bad addresses, and cross-references these addresses against the latest U.S. or Canadian postal delivery databases to make sure they are current and letters will deliver to the right places.



ONLINE CLAIM PROCESS – LONG LOST MONEY

You can configure security attributes and present your pre-escheat property for public search via the [Long Lost Money](#) web portal where lost owners can track down their unclaimed properties.

When the lost owners find what they are looking for, they can start the claimant process within the website, which includes filling out a pre-filled claim form, attaching required documentation, and sending the claim to you to initiate the transfer process.

HOW UPENTERPRISE TIGHTENS YOUR SECURITY

Let's address the obvious. UPEnterprise is a cloud-based platform. While the business benefits of using a fully-hosted and managed cloud application are well-documented, you may wonder: "Doesn't the cloud put our data (or worse, our clients' data) at risk?"

Not with UPEnterprise. In fact, using UPEnterprise will strengthen the security of your data and unclaimed property processes, using the correct blend of security attributes and breach prevention capabilities to meet the most stringent standards, including:



MICROSOFT AZURE PLATFORM AS A SERVICE (PAAS)

UPEnterprise is a fully-managed web application using Microsoft Azure, the cloud platform of choice by 57% of the Fortune 500. Coupled with 7x24x365 fully-monitored security services, you benefit from Microsoft's unmatched scale and experience running compliant online services around the globe.



SECURITY ADMINISTRATION

A separate Security Administration application is available so your security administrator can use role-based security to manage users, control access rights, and implement security standards that align with your company-specific requirements across the entire UPEnterprise web application.



SHAREFILE VIRTUAL DATA ROOM

Via the UPEnterprise Library, all documents and reports are securely stored within Citrix ShareFile's virtual data room – it's your complete due diligence solution. With this web-based repository, your security administrator can easily control, share, and track your secured documents and your users, wherever they reside, can access documents and reports easily and securely, and with complete transparency thanks to accompanying audit trails.



UBIQUITOUS ENCRYPTION

We recognize that securing data from point-to-point and in the extended enterprise is crucial to meeting data protection security and compliance requirements. Whether in transit or at rest, all data in UPEnterprise is fully-encrypted – all the time – using an industry-standard AES-256 symmetric key.

ABOUT ETM

ETM is a Web-application-development firm that specializes in providing statutory financial reporting, tax-compliance services. ETM is dedicated to financial processing and reporting, making its clients more efficient, consistently accurate, and uniformly compliant. Founded in 2001, ETM now serves nearly 50,000 companies in automating the administration and filing of financial information to meet numerous regulated reporting requirements.